

# SAWTEQ

## S-180 / S-188

**Performance tailored to your needs.**  
Our panel dividing saw







## SAWTEQ S-180 ProfiLine/ S-188 ProfiLine – for efficient and precise cutting

Special requirements call for special solutions. That's why HOMAG has developed unique panel dividing saws especially for customers in China: the SAWTEQ S-180 ProfiLine as well as the SAWTEQ S-188 ProfiLine with lifting table. These saws redefine the relationship between price and performance, impress with their high precision and can be flexibly adapted to your requirements.

### YOUR SOLUTION

---

[Would you like more information about our products?](#)

[Click here for the public WeChat account of HOMAG China](#)



### CONTENTS

- 04 Software
- 10 SAWTEQ S-180 ProfiLine
- 12 SAWTEQ S-188 ProfiLine with lifting Table
- 14 Standard features
- 20 Optional features
- 25 Technical data
- 26 Services



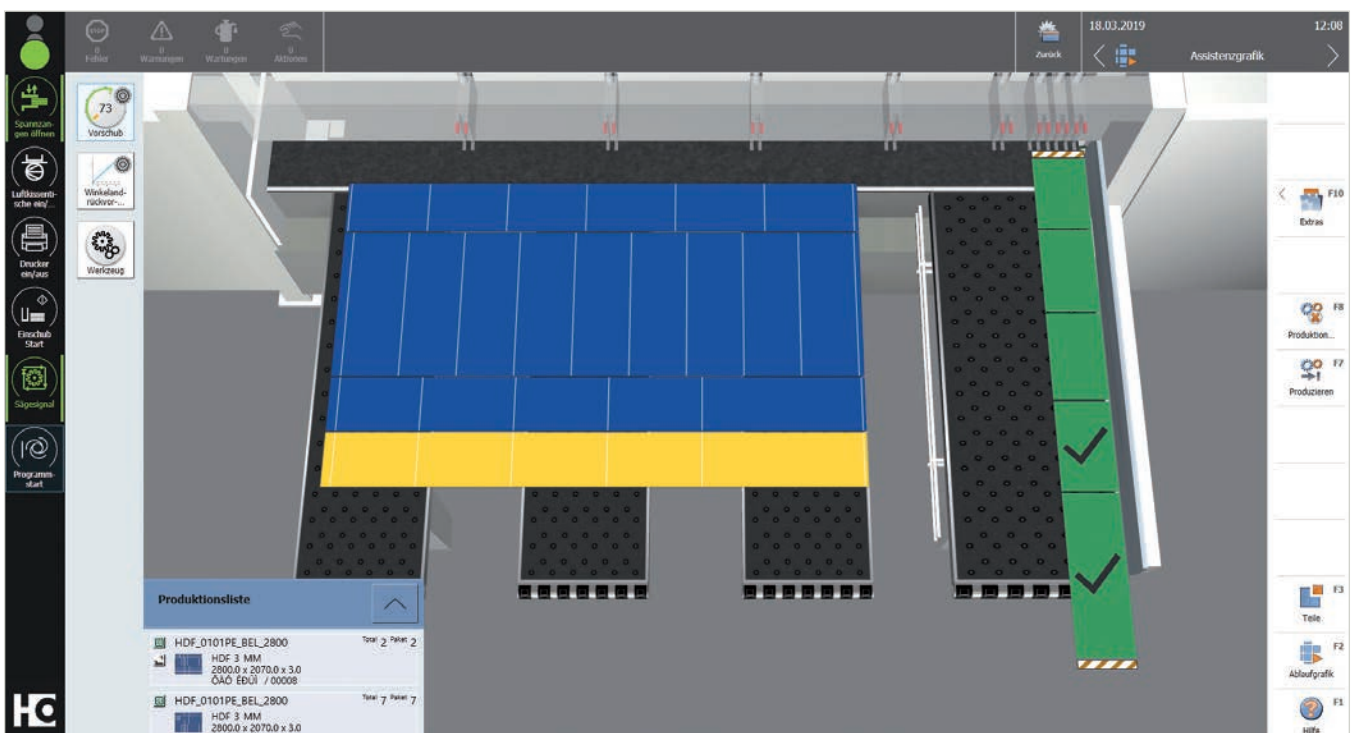


## What's different? The software!

It efficiently integrates the machine into the production process. This results in seamless, intelligently networked processes from start to finish. In short: the right software unlocks new value-added potential. That is what makes it so important.

# CADmatic 5 – intuitive to operate and open for digital networking

CADmatic 5 is the state-of-the-art, high-performance saw control system from HOMAG. A wide range of functions and easy to handle. This is ensured thanks to the intuitive operating concept and clear administrative functions. What's more, CADmatic 5 is open for communication with other machines and software solutions.



## CADmatic 5 – the change in perspective

The latest generation of the HOMAG saw control system has a 3D assistance graphic that clearly shows the machine operator all the cutting steps in order. It can be operated intuitively, which shortens the training time and reduces errors to a minimum.

## NEW: quickTip – the assistant for optimal use of the machine functions

quickTip is a new assistance function integrated into the HOMAG saw control system for maximum quality, operating comfort and performance. It supports the machine operator by providing recommendations for optimal use of functions directly at the saw. The advantage is that the functions and parameters can be activated centrally at one single point in CADmatic – this simplifies work, ensures smooth processes and a uniformly high output.

## Highlights:

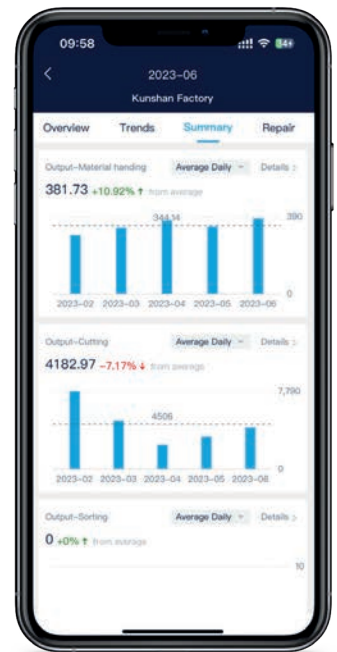
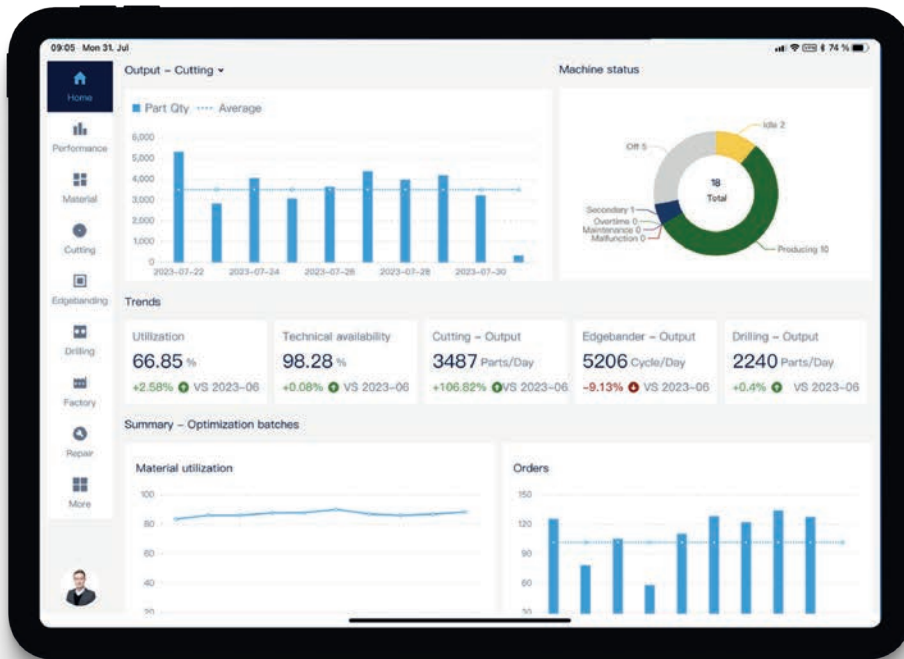
- Simple, intuitive and ergonomic machine operation thanks to the 3D assistance graphic
- This results in efficient processes and a steady output
- 24" swiveling full-HD multi-touch display in widescreen format is easy to use by swiping, scrolling and zooming
- Uniform operating concept thanks to the powerTouch user interface

**Find out more in the „CADmatic“ brochure.**

**quickTip supports the machine operator easily, so they can use the full potential of the machine**

# PulseCloud - our cloud platform for industrial Internet-of-things

PulseCloud is our industry leading IoT-platform, that allows you to use the data from your machines to use. From monitoring the realtime status of your equipment, via benchmarking your machine efficiency to the in-depth analysis of your production data, our solution offers various use-cases on all common platforms. Get a head-start when it comes to smart manufacturing and IoT, by connecting your equipment to PulseCloud.

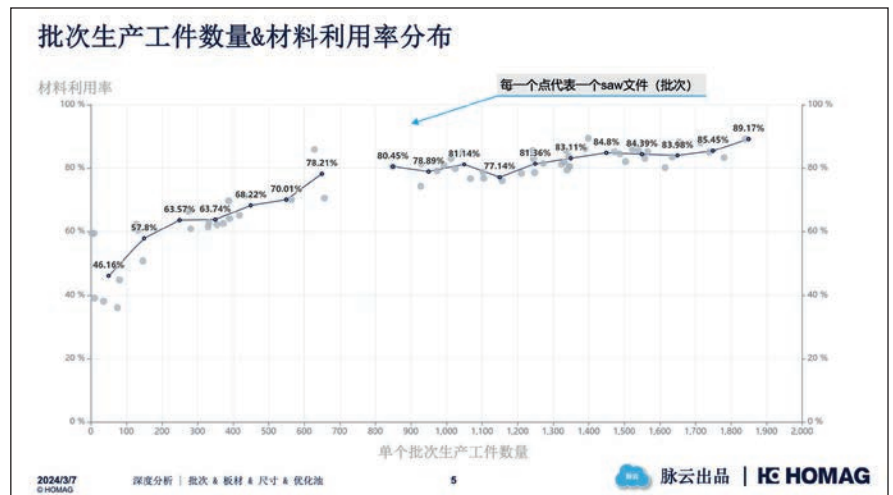


## Highlights

- Monitor your machines from anywhere at anytime
- Find potentials for improvement to increase your efficiency and reduce your cost
- Use of state-of-the-art technology that complies with the German standards for privacy and data security
- Make use of our consulting services to train your team on how to use data in their daily work

## NEW: SAW file analysis - Offline data analysis, benchmarking and consultation

Material cost is one of the key drivers of the manufacturing cost in our industry. Make use of our saw file analysis to improve your yield and batch creation logic.





# Cloud Optimization Solution



## Efficient and Convenient for Panel Dividing

- Cloud Optimization is a SaaS product that can be used online without geographical limitations.
- The Cloud Optimization platform has better security and stability.
- It does not occupy hardware resources, reducing the risk of system crashes caused by computer anomalies.

## Online Optimization, Small Investment and High Returns

- Annual payment helps to ease the financial pressure on enterprises.
- No need to hire professional personnel for optimization.
- Cloud computing services provide free upgrades and maintenance, ensuring worry-free operation.
- Seamless connection to HOMAG saws.

## Effortless and Cost-effective

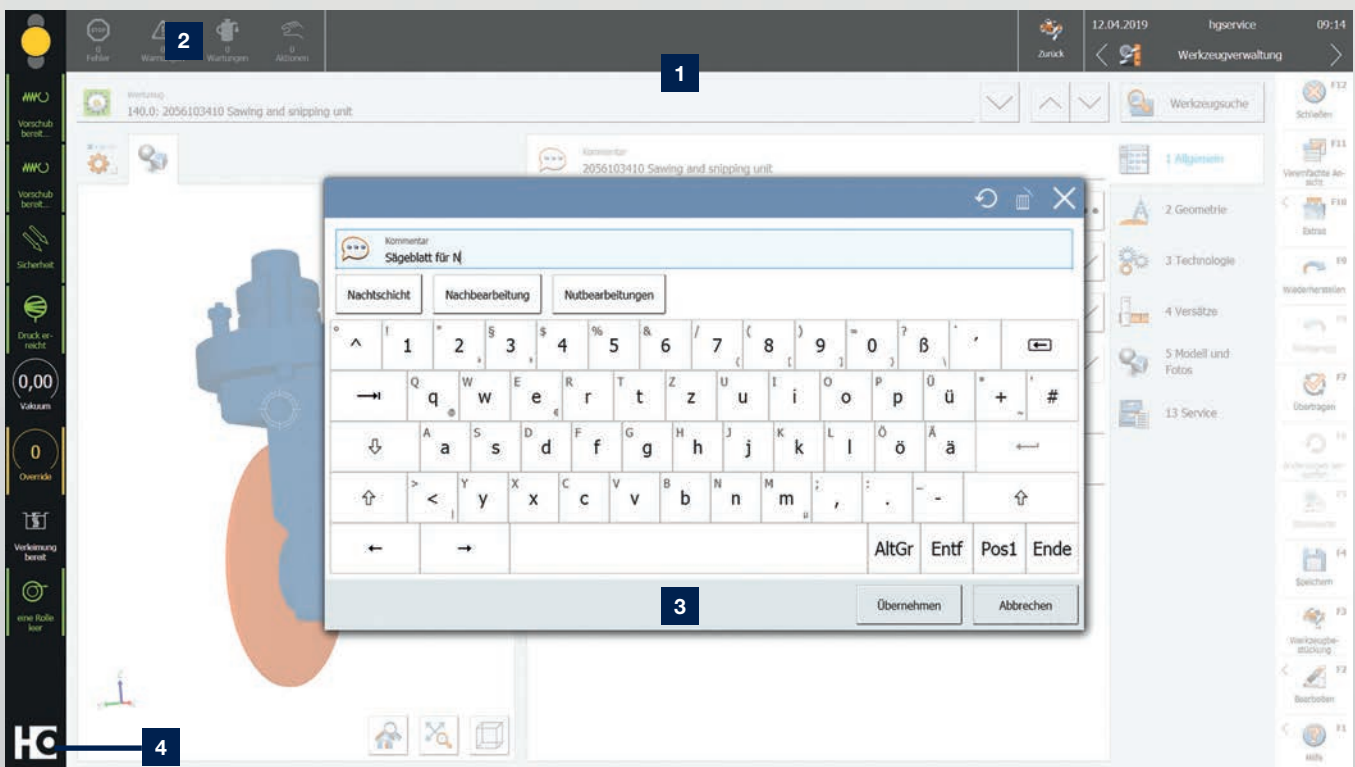
- Simple and easy-to-use, only two steps are required to export optimization results.
- Fast optimization speed and high utilization of board materials, saving material costs.

# The next generation of powerTouch: **powerTouch2**

Faster, more comfortable, clearer: Enjoy the benefits of our further improved powerTouch user interface. We have optimized our standardized operating concept and further adapted it to our customers' requirements. Controlling your HOMAG machines is now even faster and more intuitive. The new, modern design has a clear structure. The innovative touch operation allows you to achieve the desired result easily and comfortably.

With the new powerTouch generation, you can enter information at your machine even more quickly. Compared to the previous version, you can achieve a time saving of up to 30%. This is possible thanks to new features, such as automatic word completion, a pop-up keyboard that can be kept open and Windows-like functions, such as the selection of common actions directly via the start button.

Our successful powerTouch philosophy – **standardized, simple, ergonomic, evolutionary** – consistently further developed



- 1 The powerTouch2 screen is clearly structured. You can see all the important information at a glance, but you still have all the details.
- 2 We have also improved the traffic light dialog further. You can now directly influence the machine's production readiness by selecting actions via the traffic light icon.
- 3 A functional pop-up keyboard that can be kept open, including automatic word completion for faster entries (when you enter the first letters, frequently used applications are proposed and you can select them directly).
- 4 Enhanced "Start" menu with additional information displayed (e.g. an indication of how many messages are currently pending or status bars that show the progress of the application) and direct access to actions (e.g. confirmation of actions without having to jump to the application).





### **Cut Rite cutting optimization software**

Efficiency through planning: This short phrase sums up the key benefits of the Cut Rite software. With this world-leading software solution, you can optimize waste and systematically lower the overall costs for cutting.

### **Highlights**

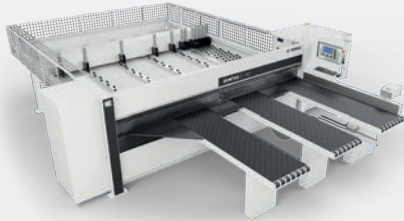
- Seamless, precise and highly efficient processes ensure optimized project control
- Efficient cutting processes which can be individually adapted to your production processes using parameter settings
- Full cost control within the cutting process: material costs and processing time are calculated automatically when the quotation is prepared
- Faster calculations by using all the processors in the PC
- Simple handling: clearly structured, easy to operate and graphics display the information

**Find out more in the „Cut Rite“ brochure.**

## SAWTEQ S-180 ProfiLine

If you want to stay ahead of the competition, you need an efficient panel dividing saw that is unrivaled in the market: reliable, capable of high throughput and cost-effective. These are precisely the strengths of the SAWTEQ S-180 ProfiLine. In addition, the machine has a comprehensive safety concept. Following German standards and a specific choice of components, we've made working with the SAWTEQ S-180 ProfiLine not only comfortable, but also safe to handle.





## The Highlights

- Power Concept Classic (optional)
- Improved safety equipment
- Scoring saw adjustment now motorized
- Manual grooving

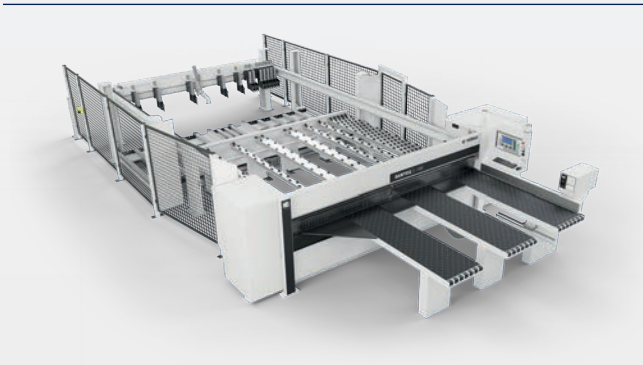




## SAWTEQ S-188 ProfiLine with lifting table

Cutting is even more ergonomic, more efficient and faster with the integrated lifting table. In addition to manual loading from the front, program-controlled loading from the rear is also possible – automatically and in sync with the saw. In addition, the machine has a comprehensive safety concept. Following German standards and a specific choice of components, we've made working with the SAWTEQ S-188 ProfiLine not only comfortable, but also safe to handle.





## Die Highlights

- Automatic loading via integrated lifting table
- Saw carriage feed optionally up to 120 mm/min
- Main saw motor with 15 kW
- Power Concept Advanced (optional)







## Standard features

The SAWTEQ S-180 ProfiLine as well as the SAWTEQ S-188 ProfiLine with lifting table have the highest mechanical engineering quality. You get top performance at a low price - even in the basic version.



## ecoPlus – because efficiency starts with the use of resources

Energy, time, material and personnel are all precious resources. Conserving them increases productivity and saves costs. ecoPlus technologies from HOMAG help you to achieve this, providing countless innovations that save energy and reduce your operating costs. What's more, ecoPlus reduces CO<sub>2</sub> emissions and protects the environment. A worthwhile investment twice over.

---

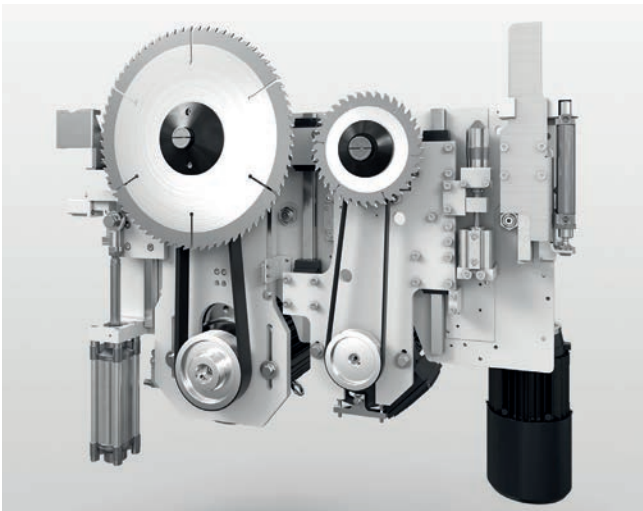
### ECOPLUS TECHNOLOGIES FOR MAXIMUM ENERGY SAVINGS

- The standby button – a standard feature – puts the saw in an energy-saving standby mode at the touch of a button
- SAWTEQ S-180 ProfiLine as well as SAWTEQ S-188 ProfiLine with IE3 motors
- Variable speed control by means of a modern bypass circuit for all models with frequency-controlled main saw motor
- The geometry of the saw carriage enables highly efficient dust extraction
- All models are equipped with an energy monitor for monitoring consumption
- Less energy required thanks to optimized suction device
- Thin-cutting saw blades can be used on request, ensuring reduced waste and providing other benefits
- - Many innovations for improved ergonomics and seamless production processes



## The basic equipment: We've thought of everything!

Low-maintenance, ergonomic, gentle on materials, powerful and process-optimized: The SAWTEQ S-180 ProfiLine and SAWTEQ S-188 ProfiLine with lifting table owe these and many other features to impressive basic technical equipment.



### Saw carriage with Power-Loc

Maximum running smoothness, high precision and low energy consumption characterize the new saw carriage.

- Torsion-resistant, solid and resilient basic construction of the steel plate housing for maximum dynamics and precision
- Motorized adjustment of the scoring saw
- Infinitely variable feed speed - for precise cutting of demanding materials
- Permanently precise saw blade projection
- Low-noise and maintenance-free drive
- Light scanner cleaned with brush
- Power-Loc system: quick and easy saw blade change



### Central side pressure device

- Integrated directly into the saw carriage. This reduces the cycle times by up to 25% in comparison with conventional systems
- The contact pressure is infinitely variable – ideal for thin panels, laminates or sensitive materials



**Clamps: perfection down to the last detail**

- The robust HOMAG clamps position the material carefully and precisely at the cutting line.
- The upper fingers of the clamps do not exert any leverage regardless of the package height; instead, they lower themselves horizontally and with the entire contact surface onto the material. This increases the penetration depth and ensures a firm hold
- Designed for continuous multi-shift operation

**Rugged pressure beam for first-class cutting quality**

- Large-area pressure zone directly at the cutting line reduces material vibrations to a minimum
- Toothed rack and pinion ensure the necessary parallel adjustment
- Linear guide on both sides for precise cuts, even in books
- New: Automatic height control for SAWTEQ S-180 ProfiLine and SAWTEQ S-188 ProfiLine with lifting table

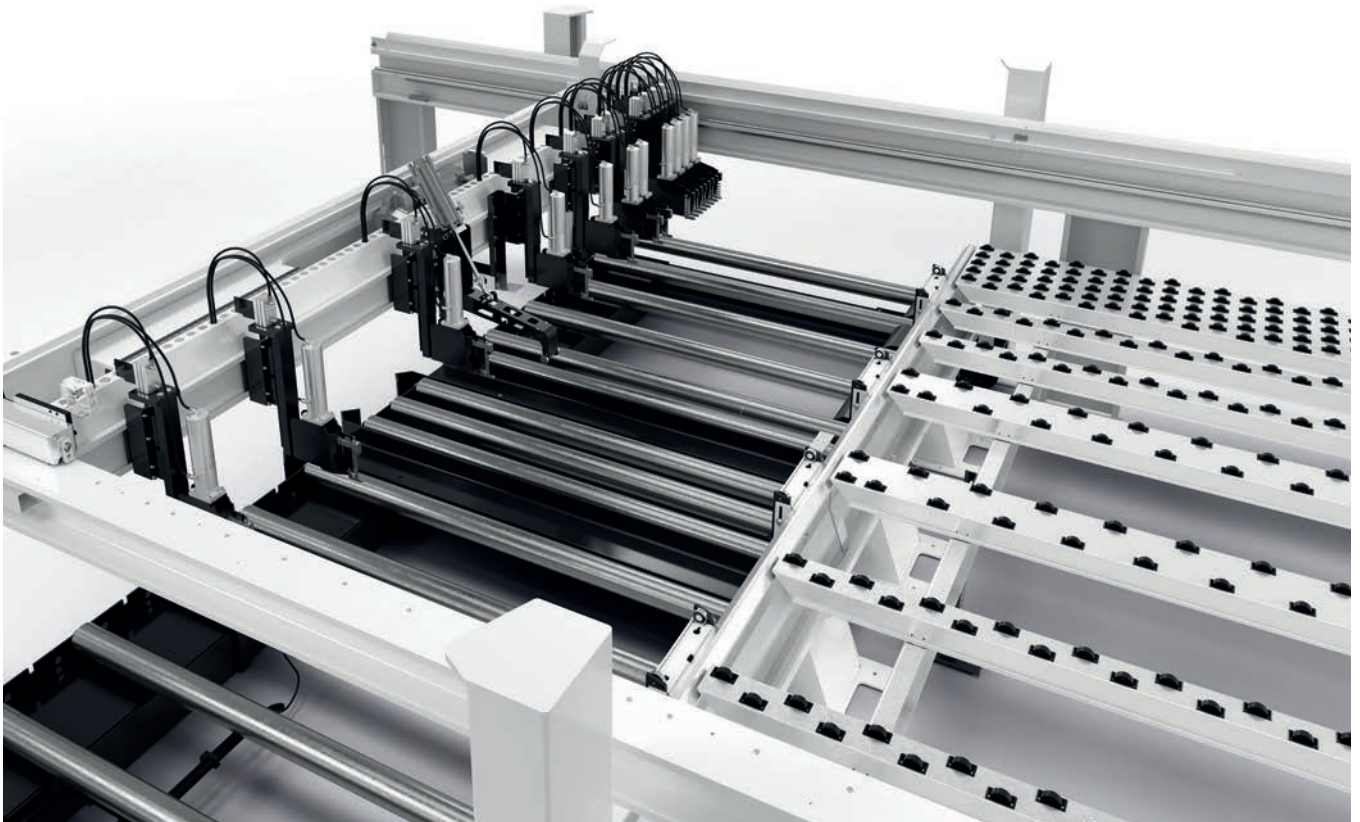
**Program fence for precision and dimensional accuracy**

- Resistant to torsion and bending
- Electronically controlled
- Precision guidance
- Electromagnetic measuring system guarantees a positioning accuracy of +/- 0.2 mm per meter
- Measuring system involves no wear and no maintenance



## SAWTEQ S-188 ProfiLine with lifting table – equipped for higher throughput

HOMAG saws with lifting table go some way toward automating feeding and are therefore equipped with additional technical solutions even in the standard version.



### Powerful feeding system

- Panels are fed via an electro-hydraulic four-column lifting table
- Automatic determination of book height
- Equipped as standard with longitudinal profiles and sensing device
- Maintenance-free and no lubrication required



### Separate backing wall

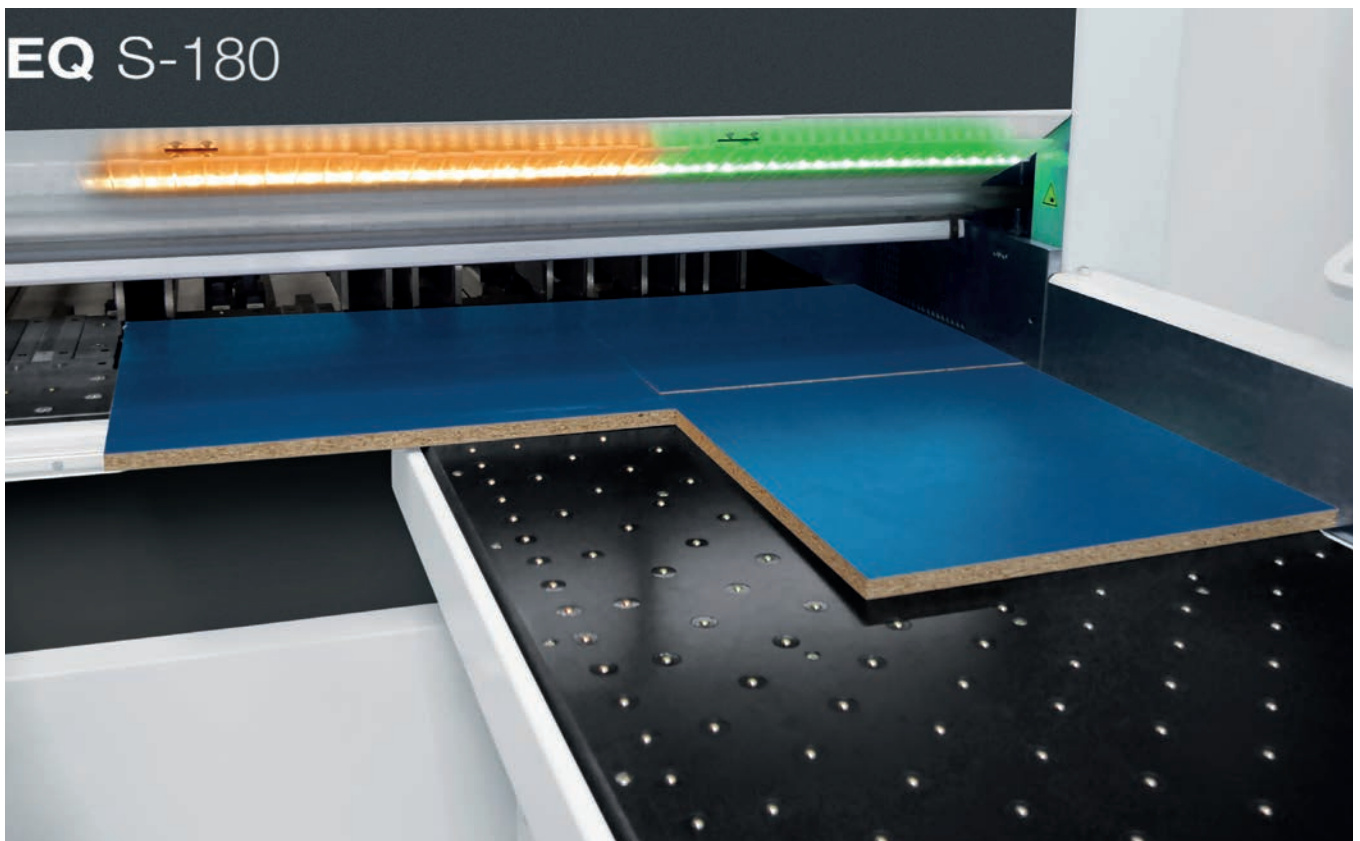
The backing wall is not attached to the machine bed, ensuring precise cuts. This is because vibrations caused by the movement of stacks on the lifting table are not transferred to the machine bed.



### Lifttable with folkliift cut-outs

# Innovative operator guidance with IntelliGuide Classic

The IntelliGuide innovative operator assistance system is now available for the SAWTEQ S-180 ProfiLine as well as the SAWTEQ S-188 ProfiLine with a lifting table. The Classic version features an LED strip at the cutting line which guides the operator by means of light signals.



## IntelliGuide Classic at a glance

- Colored LED signals at the cutting line allow intuitive operation and a quicker, safer way of working
- Using the colored LED elements, machine operators can immediately see if a part has been fully processed, needs to be cut again or can be disposed of as a waste part
- On the basis of the LEDs that light up, the operator can determine whether the workpiece on the table meets the required specifications

**Would you like more information?  
Find out more in the „IntelliGuide“  
brochure.**

## Benefits of the IntelliGuide Classic

- Quick and easy processes:  
Operator and saw work in tandem and do not slow each other down
- The machine is intuitive to operate thanks to colored LED signals:  
The operator rarely has to look at the monitor, which allows the cutting pattern to be processed in a concentrated manner
- Smooth, ergonomic and safe processes for efficient working
- Easy to change operator at any time

## Machine table equipped with air jets throughout

Anyone working with sensitive material or especially heavy panels and books will benefit from the machine table being equipped with air jets throughout.

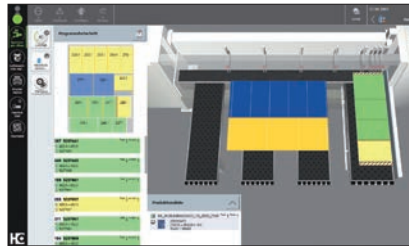




## Additional equipment

More is always possible with HOMAG: more power, better ergonomics, improved cutting. With HOMAG you have the choice of many additional technologies for even more efficiency in cutting.





**CADmatic 5**  
**Classic destacking module**

Which component goes where? The integrated destacking display of the Classic destacking module provides the answer to this question. The individual parts are color-coded both in the cutting pattern and in the assistance graphic. This means that the machine operator can clearly see which of the parts already produced have been allocated to which destacking stations.



**Manual trim stops**

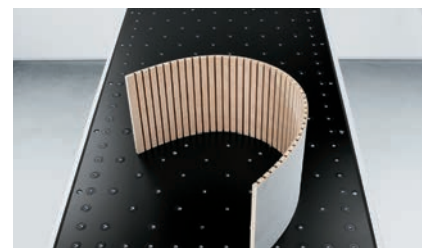
With these, your saw can also master material with overhanging laminates or veneers. The trim stops are integrated into the clamps and are simply flipped forward when required.

- Gentle handling of sensitive materials with overhanging covering layers
- Precise positioning



**Start/stop bar on first air cushion table**

For an convenient program start independent of control panel and good strip and plate handling especially for long strips.

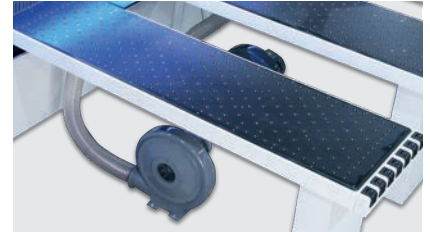


**Automatic Grooving**

This option saves you an entire work step in post-processing. This is because your saw will also groove the panel material. There's more: thanks to the automatic motorized groove adjustment, the groove depth can easily be adjusted to individual requirements directly on the control panel.

## Extras for more efficiency and ergonomics

Get even more out of your SAWTEQ S-180 ProfiLine as well as SAWTEQ S-188 ProfiLine with the following extras. Whether in panel handling or through the highly efficient marking of finished parts directly on the saw.

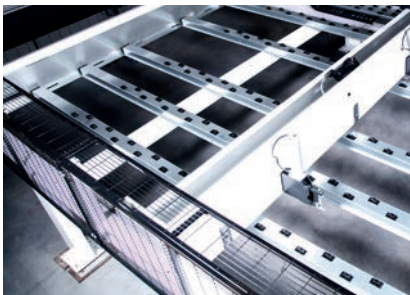


### Second fan for air cushion tables

Heavy packages and sensitive materials can be moved even more ergonomically and gently thanks to an additional blower under the second air cushion table. The additional blower can be retrofitted at any time on request.

### More extras

Option for additional clamps, with 1 or 2 fingers.



### The new plus in safety

For maximum operating safety, the SAWTEQ S-180 ProfiLine can now be equipped with an optional safety guard. It completely shields the rear machine table and thus prevents any accidental reaching in. A big plus in safety for a small investment.



### Classic label printer

The Classic label printer provides an introduction to part identification. Provide all process-relevant information for the subsequent work steps.



### Advanced label printer for superb results

The label printer from HOMAG allows you to print customized labels directly at the saw and design them to include bar codes, text and graphics if required. If you also use our Cut Rite optimization software, the material goes directly to the next process step with printed instructions. In this way, you can integrate the saw perfectly into your production flow.

## Tailored storage system integration

HOMAG offers you a wide range of feeding solutions, large and small, for your saw.



### Simple storage system integration with CADmatic support

Ideal for all SAWTEQ S-180 / S-188 saws and feeding from a storage system separated from the saw. How it works:

- On the basis of cutting patterns optimized in the office, the horizontal storage system assembles a stack of panels for cutting
- Using the CADmatic function "JoblistControl", you document the result in a material list
- Now you move the finished stack of panels to the saw with, for example, a fork-lift truck
- At the saw, you simply scan the bar code on the material list prepared by "JoblistControl"
- Now the saw knows what has to be done and starts the cutting process

### Storage system integration via roller conveyors to the air cushion table

You can connect your SAWTEQ S-180 ProfiLine to a panel store via roller conveyors to the air cushion table. How it works:

- The storage system is connected via a roller conveyor at the side of the air cushion table on the left
- This roller conveyor transports the panels or books of panels to the air cushion tables left
- The corresponding optimized cutting pattern is selected via the CADmatic control software
- Once the panel or book of panels is on the air cushion tables, the respective production run can start
- Perfect handling – even with just one machine operator
- Easy, ergonomic operation

### Storage system integration – only for SAWTEQ S-188 ProfiLine with lifting table

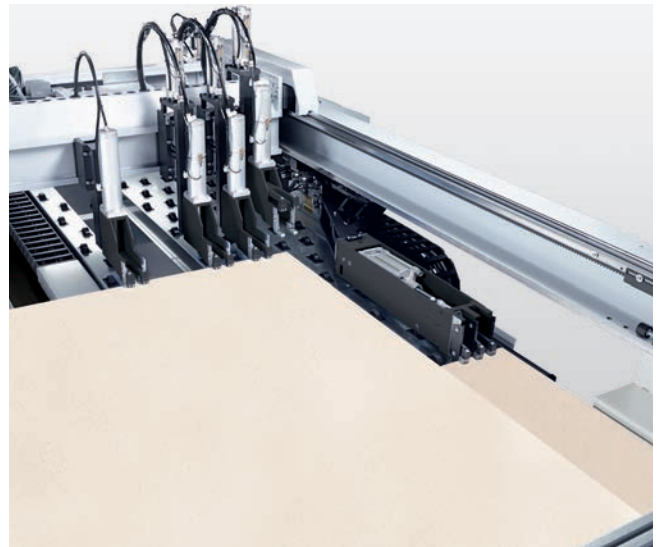
Enables stacks to be fed directly from the store. How it works:

- The horizontal storage system creates a stack that is then transported via roller conveyor directly to the lifting table
- Roller conveyor connection from the right or the left and from the back via roller conveyor
- Once the lifting table has been loaded, the production data is automatically transferred to the saw



# Power Concept Classic – for even more performance and material throughput

At the heart of this technology is a clamp that can be moved separately. Using this clamp, two strips with different cross cuts can be cut to length together.



## Power Concept Classic for the SAWTEQ S-180 ProfiLine (without lifting table) delivers up to 30% more output

- An additional clamp operates independently on the program fence and moves in front of the program fence if necessary
- An algorithm adapted to the Power Concept Classic sorts the strips directly at the saw. This is based on existing optimization data for the shortest machining times
- Good to know: if you choose Power Concept Classic, you will automatically receive the first air cushion table in a wider version. In addition, the saw is equipped with another start-stop key on the second air cushion table.

## Power Concept Advanced for the SAWTEQ S-188 ProfiLine with lifting table delivers up to 40% more output

- An additional clamp that operates independently
- Clamps on the program fence that can be raised out of the overlapping work area as needed
- An algorithm adapted to the Power Concept Advanced sorts the strips directly at the saw. This is based on existing optimization data for the shortest machining times.

### Features with Power Concept Advanced:

- Protective fence instead of protective guard
- For technical reasons, saw blade projection is automatically limited to 80 mm.

### Our recommendation:

#### Add clamp position 775 mm

For more stability of the second strip, flexibility in strip sorting and optimal usage of Power Concept Classic.

#### Power Concept in combination with IntelliGuide Classic

The innovative assistance system supports the machine operator with the help of LED light signals at the cutting line in the safe, simple and fast processing of the increased material throughput.

## POWER CONCEPT



Lower costs per cut



Significantly improved material flow



High material throughput to easily handle peaks in production

TECHNICAL DATA*		
Model	SAWTEQ S-180 ProfiLine	SAWTEQ S-188 ProfiLine with lifting table
Saw blade projection (mm)	95	95
Cutting length (mm)	3,800	3,800
Clamps	6 (optional up to 5 more)	6 (optional up to 5 more)
Saw carriage speed (m/min)	up to 120	up to 120
Program fence speed (m/min)	80**	80**
Operating software	CADmatic 5	CADmatic 5
Operating system	Windows 10	Windows 10
Monitor	24" TFT flatscreen display	24" TFT flatscreen display
Main saw motor (kW)	15	15
Scoring saw motor (kW)	2,2	2,2
Main saw blade (mm)	380 x 4,4 x 60	380 x 4,4 x 60
Scoring saw blade (mm)	200 x 4,4 - 5,4 x 45	200 x 4,4 - 5,4 x 45
Average total air requirement (NI/min)	150	150
Dust extraction system (m <sup>3</sup> /h)	3,350 (26 m/sec)	3,300 (26 m/sec)
Storage system integration	limited via conveyers to front of SAWTEQ S-180	limited via conveyers SAWTEQ S-188
Pressure height beam control	✓	✓
Machine table with air jets	✓	✓

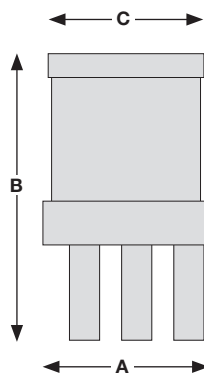
\* Values relate to the standard features

\*\* Forwards 25 m/min

\*\*\* Dim. A: incl. 64 mm for extraction connection, dim. C: standard program fence width

MACHINE DIMENSIONS***			
SAWTEQ S-180	A (mm)	B (mm)	C (mm)
S-180/38/38	6,077	7,803	4,487

MACHINE DIMENSIONS***			
SAWTEQ S-188 with lifting table	A (mm)	B (mm)	C (mm)
S-188/38/22	5,867	10,886	4,196



# VALYOU

Our Mission, Your Performance.

## LIFE CYCLE SERVICES

Improved performance, more efficient processes, faster help, assurance of availability and smarter working

### TEAM & COVERAGE

Largest global service network in the industry with over 1,350 personnel.

### INSTALLATION & COMMISSIONING

For a smooth start, we only let proven experts manage your setup.

### OPERATION & CONTROL

After teaching your personnel the intuitive control system, our clever apps help to make the operator's life much easier.

### MAINTENANCE & SERVICING

To keep things running, we're happy to take a preventative approach. You decide how often and how intensively you want the support to be. As we all know, prevention is better than the cure.

### eSHOP & ONLINE ADVANTAGE

A few clicks and it's fixed. Receive exclusive advantages by ordering spare parts online, depending on market availability. [shop.homag.com](http://shop.homag.com)

### HOTLINE & READINESS

When there's an emergency, we're here. Direct by phone, digitally via app or video, or with on-site support. We are close to you with over 90 regional service organizations worldwide. With more than 35,000 spare parts immediately available, we can deliver 85% of your orders fast.

### TRAINING & EDUCATION

With classroom, live online or eLearning training, we offer flexible options to help you get knowledge. We conduct over 4,000 customer training courses every year, and we even have our own training centers in 19 countries

### MODERNIZATION & IMPROVEMENT

Our modernization program is tailored to your machines and processes. We can evaluate your data and situation and advise you on the next step.

### ANALYSIS & SUSTAINABILITY

On request, we analyze all your processes with proven tools and procedures (LeanSixSigma). We have a large, certified team of experts for this purpose.

### FINANCING & CONSULTING

We offer you tailor-made financing concepts worldwide. With more than 60 years of experience and a close partner network of prominent banks and insurance companies to help us to find the right solution for you, we're always transparent and reliable in processing.





**Fast support:**  
94% resolution rate  
via our hotline

**Close to you:**  
1,350 service experts worldwide

**We get things moving:**  
Over 1,000 worldwide spare parts  
shipments each day

**No one else has that:**  
Electronic documentation on over  
150,000 machines, available in 28  
languages



Technical changes, print errors and mistakes reserved. Pictures may show special equipment. | SAWTEQ S-180 / S-188 | 03/2024



**HOMAG Group AG**

info@homag.com  
www.homag.com

**YOUR SOLUTION**